

J&E Hall HSL 3221 5EAQE2EE11 (x3)

Specifications

Brand	J&E Hall
Type	HSL 3221 5EAQE2EE11 (x3)
Refrigerant	Freon
Refrigerant type	R507
kW at -20°C/+40°C	737,7
kW at -30°C/+40°C	475,8
Pressure safety switches	✓
Hp/Lp/Op	
Pressure gauges	✓
Hp/Lp/Op	
Oil separator	✓
Control panel	✓
m3 / h	1.407
Remarks	y.o.b. 2008
Remarks	600 kW at -25°C/+40°C
Package / Rack	✓
Sizes	6650x2450x2600 mm (LxWxH)
Stock	1



Description

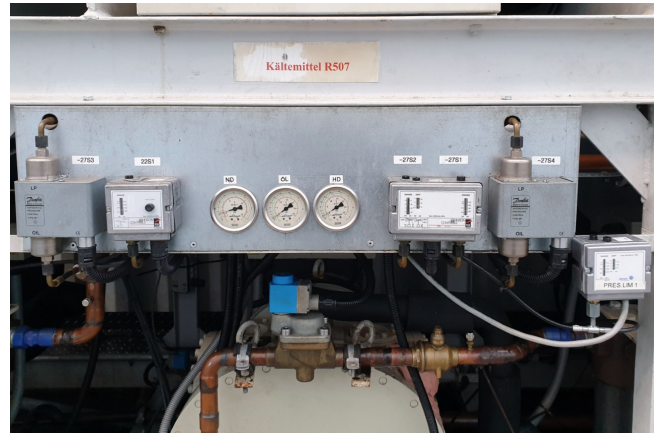
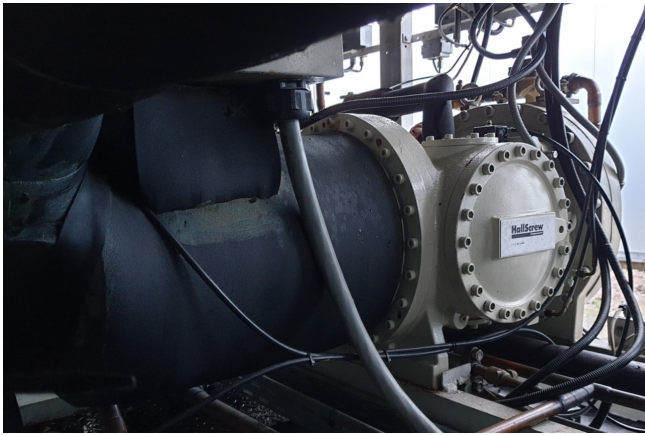
Used J&E Hall HSL 3221 5EAQE2EE11 (x3)

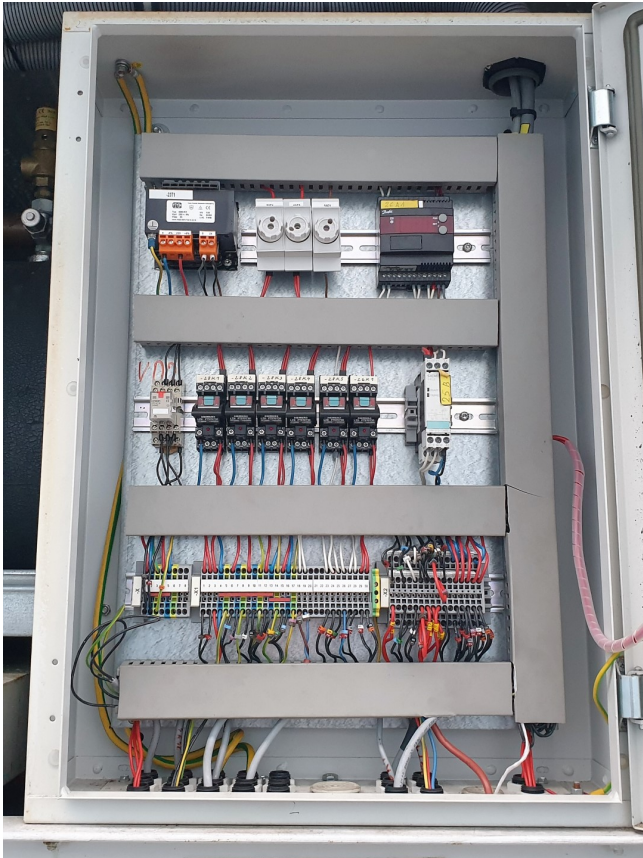
Used J&E Hall Screw compressor unit for low temperatures. Containing the following elements: 3x Semi-hermetic HSL 3221 5EAQE2EE11 compressors with Gea plate heat economizers. WKT oil separator 330 ltr. Control panel with Fridgwatch 2100 controller mk4. On the side of the container a LG air conditioner for temperature control inside the container. 600 kW at -25°C/+40°C, perfect for making water of 20°C.

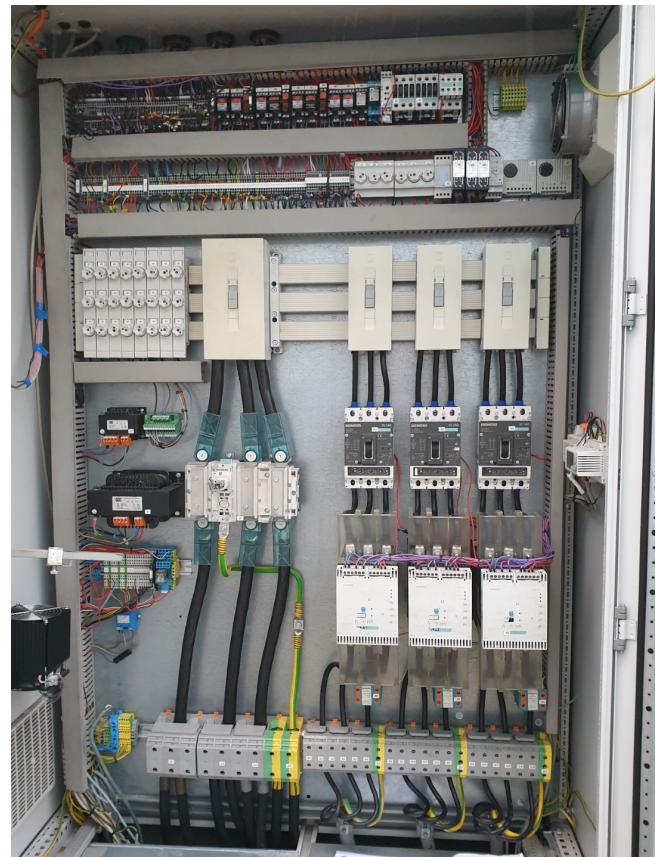
*Why choose for HOSBV? We're not only the largest used refrigeration specialist in Europe, but also, we deliver all equipment including an extensive test, warranty and industrial cleaning.

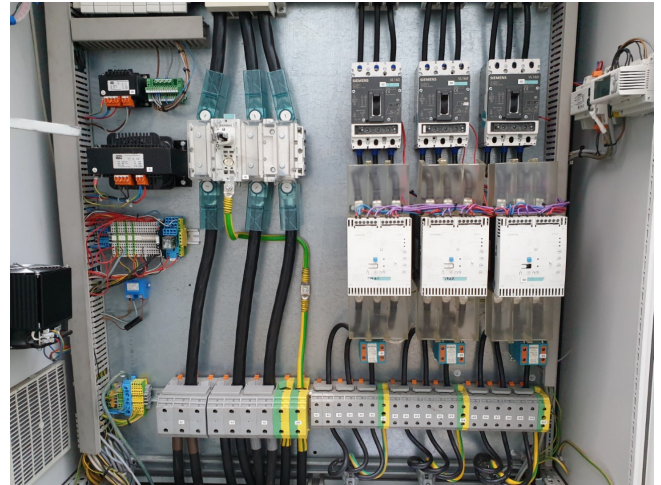
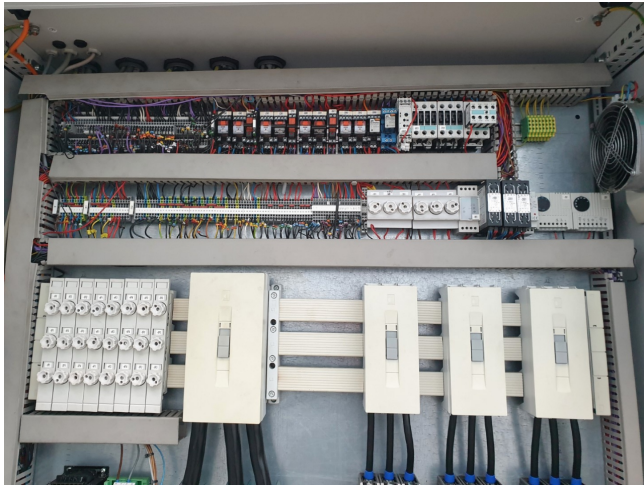
*Optional we can also perform a new paint job and arrange the logistics.











Compressor Type		Operating Condition		Compressor Cooling		Compressor Capacity	
Refrigerant	R507A	Suction [°C]	-25.00	External oil cooling	<input checked="" type="checkbox"/>	Inverter drive	<input type="checkbox"/>
Volume Ratio	Optimum	Delivery [°C]	40.00	Temperature of injection of the oil [°C]	50.00	Frequency [Hz]	50
Unit of Measure	SI (kW, C)	Suction Superheat		Liquid injection cooling	<input checked="" type="checkbox"/>	Frequency [Hz]	0.00
		Total [K]	5.00	Controlled del. Temperature [°C]	90.00	Speed [rpm]	2980
		Useful [K]	5.00	Economiser options		Speed [rpm]	0.00
		Liquid Subcooling		Both	<input type="radio"/>	Part Load [%]	100.00
		Total [K]	5.00	Economised	<input checked="" type="radio"/>	Capacity [kW]	
				Not Economised	<input type="radio"/>		
RESULTS OF THE SELECTION							
HSL 3221	Ext. Oil / No Eco	Ext. Oil / Eco	Liq. Inj / No Eco	Liq. Inj / Eco	All Clear		
Frequency [Hz]	-	50.0	-	50.0	Models		
Volume Ratio	-	4.9	-	4.9	HSL 3118		
Full load capacity [kW]	-	198.7	-	198.7	HSL 3120		
Full load input power [kW]	-	108.9	-	108.9	HSL 3121		
Full load COP	-	1.82	-	1.82	HSL 3122		
Suction mass flow rate [kg/s]	-	1.48	-	1.48	HSL 3216		
Delivery Temperature [°C]	-	61.9	-	70.2	HSL 3218		
Liquid temperature at expansion valve [°C]	-	13.50	-	13.50	HSL 3220		
Oil cooler duty [kW]	-	16.89	-		HSL 3221		
Oil injection flow rate [m³/h]	-	2.59	-		HSL 4221		
Liquid injection cooling load [kW]	-		-	0.00	HSL 4222		
Liquid injection mass flow rate [kg/s]	-		-	0.00	HSL 4223		
Economiser gauge [°C]	-	8.50	-	8.50	HSL 4224		
Liquid cooling load in subcooler [kW]	-	48.4	-				
Economiser mass flow rate [kg/s]	-	0.40	-	0.40			